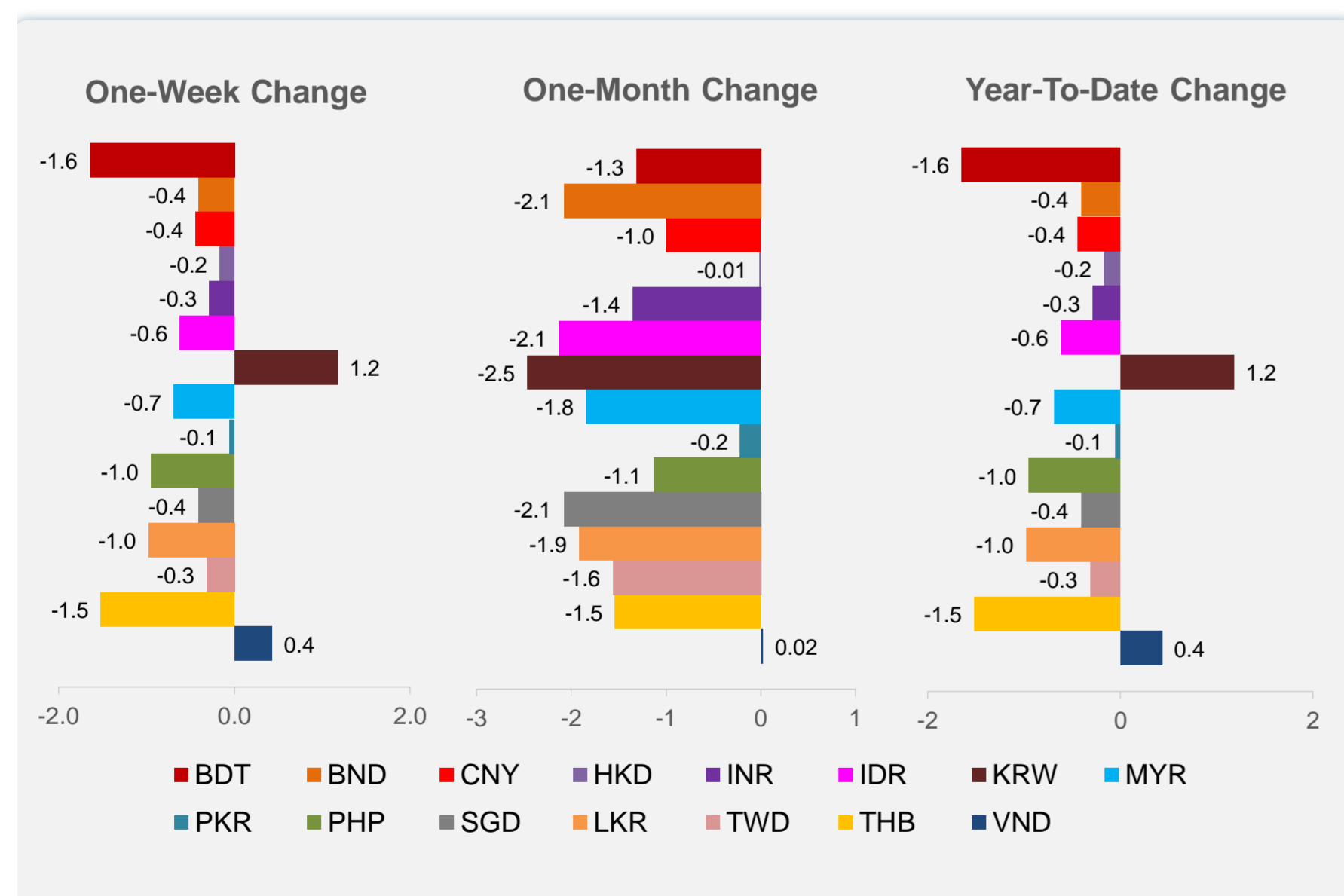
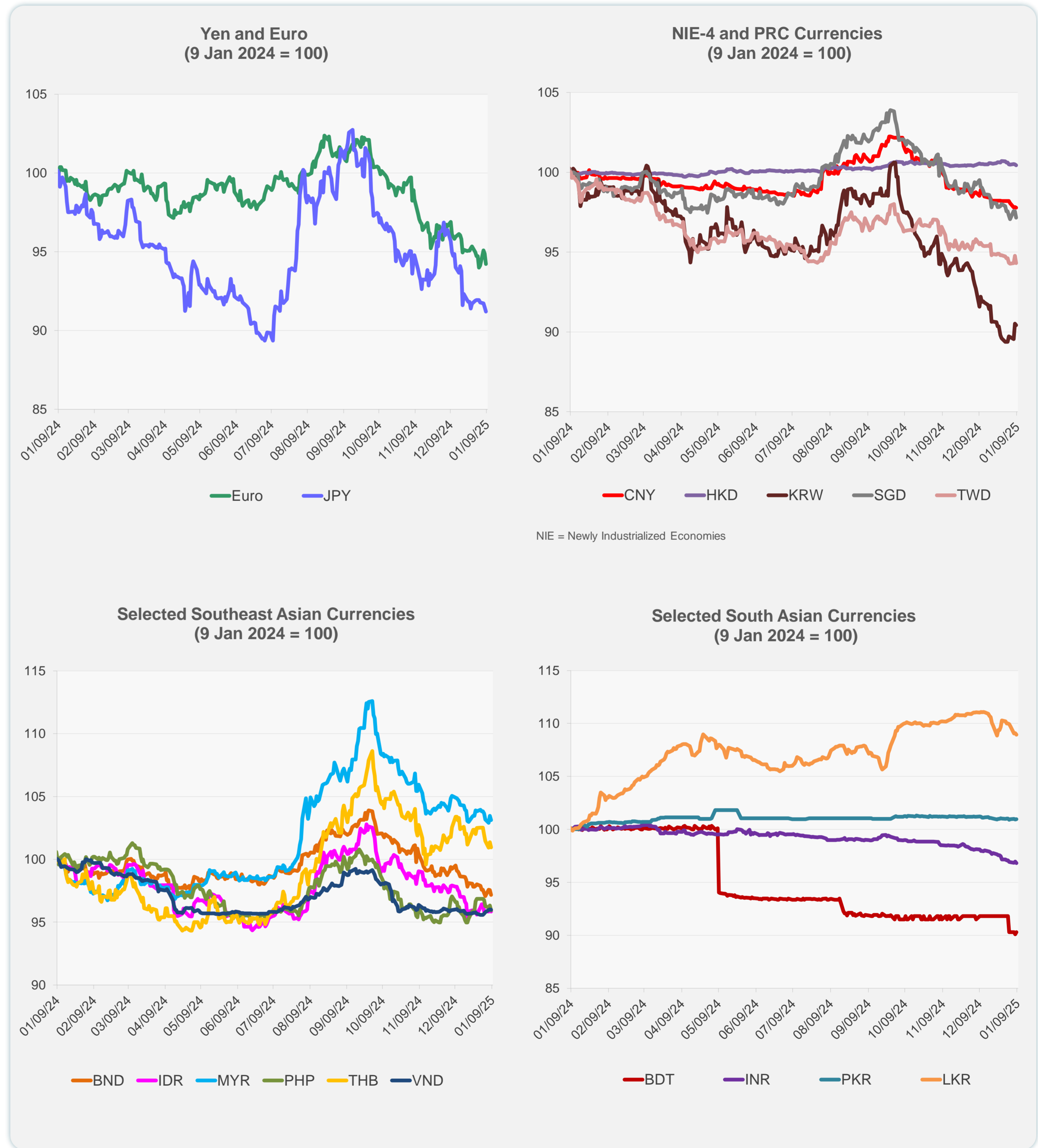
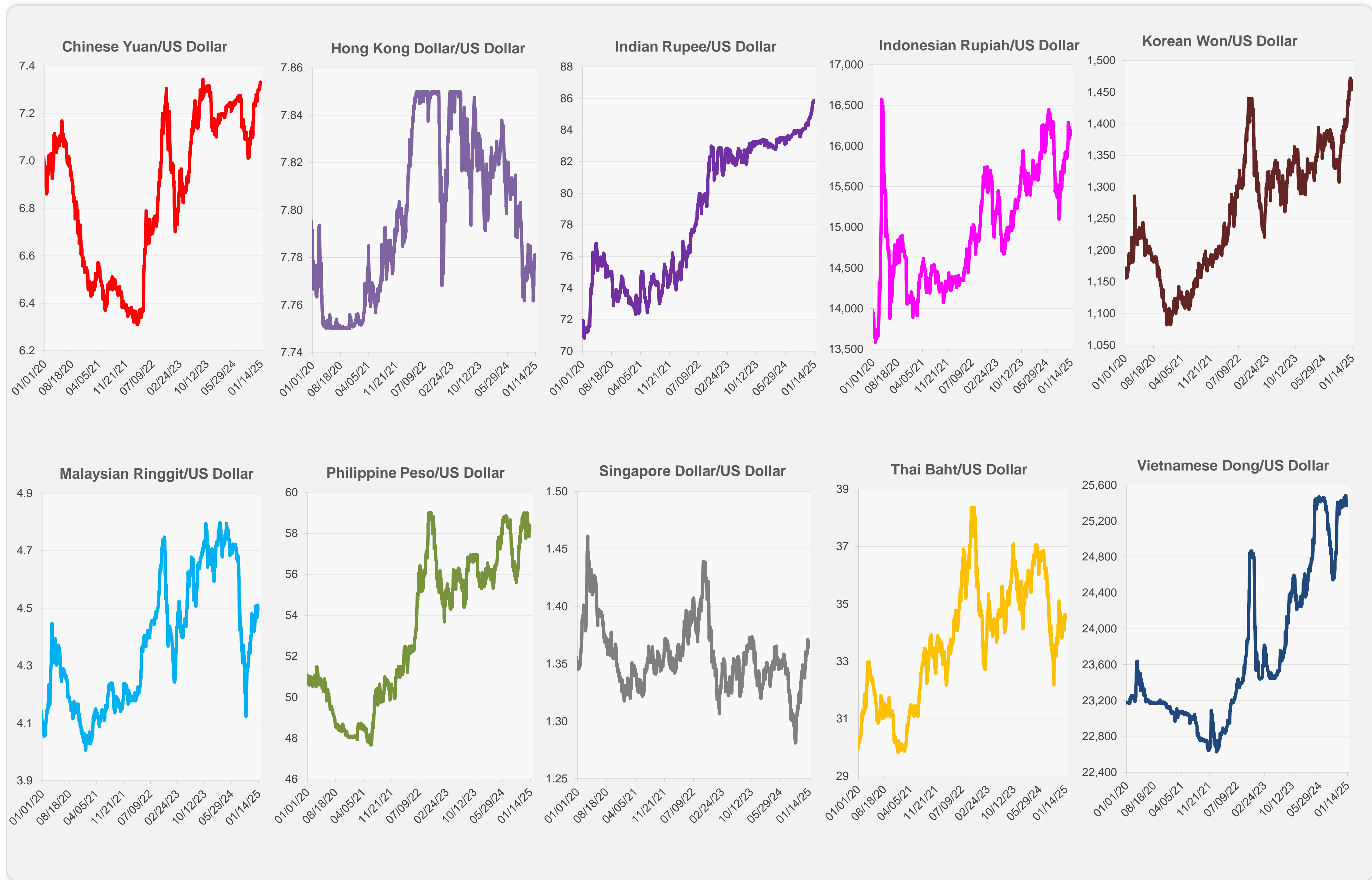


	Latest Closing	% change from Previous Day	% change from 01-Jan-25
Euro	0.97	-0.69	-0.53
Japanese yen (JPY)	158.42	-0.31	-0.80
Bangladeshi taka (BDT)	121.50	0.21	-1.65
Brunei dollar (BND)	1.37	-0.40	-0.41
Chinese yuan (CNY)	7.33	-0.05	-0.44
Hong Kong dollar (HKD)	7.78	-0.05	-0.17
Indian rupee (INR)	85.86	-0.16	-0.29
Indonesian rupiah (IDR)	16,195.00	-0.40	-0.62
Korean won (KRW)	1,455.05	-0.10	1.18
Malaysian ringgit (MYR)	4.50	-0.33	-0.69
Pakistan rupee (PKR)	278.53	0.03	-0.05
Philippine peso (PHP)	58.40	-0.39	-0.95
Singapore dollar (SGD)	1.37	-0.40	-0.41
Sri Lanka rupee (LKR)	295.89	-0.13	-0.98
Taipei,China NT dollar (TWD)	32.89	-0.47	-0.32
Thai baht (THB)	34.62	-0.40	-1.52
Vietnamese dong (VND)	25,376.00	-0.02	0.43



Note: Negative/Decreasing values indicate depreciation of local currency, and positive/increasing values indicate appreciation.
Source: ADB calculations using data from Haver Analytics.

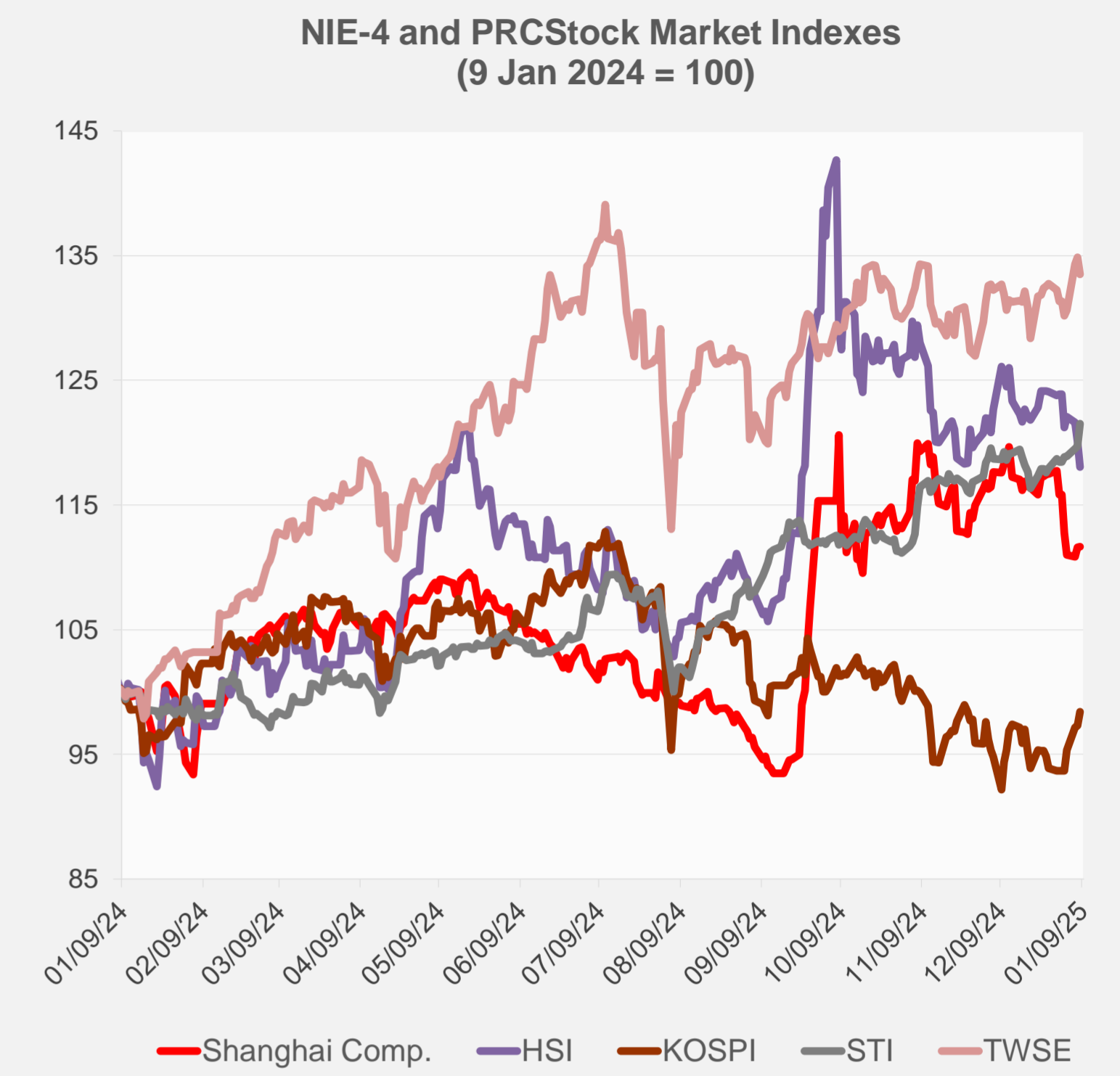
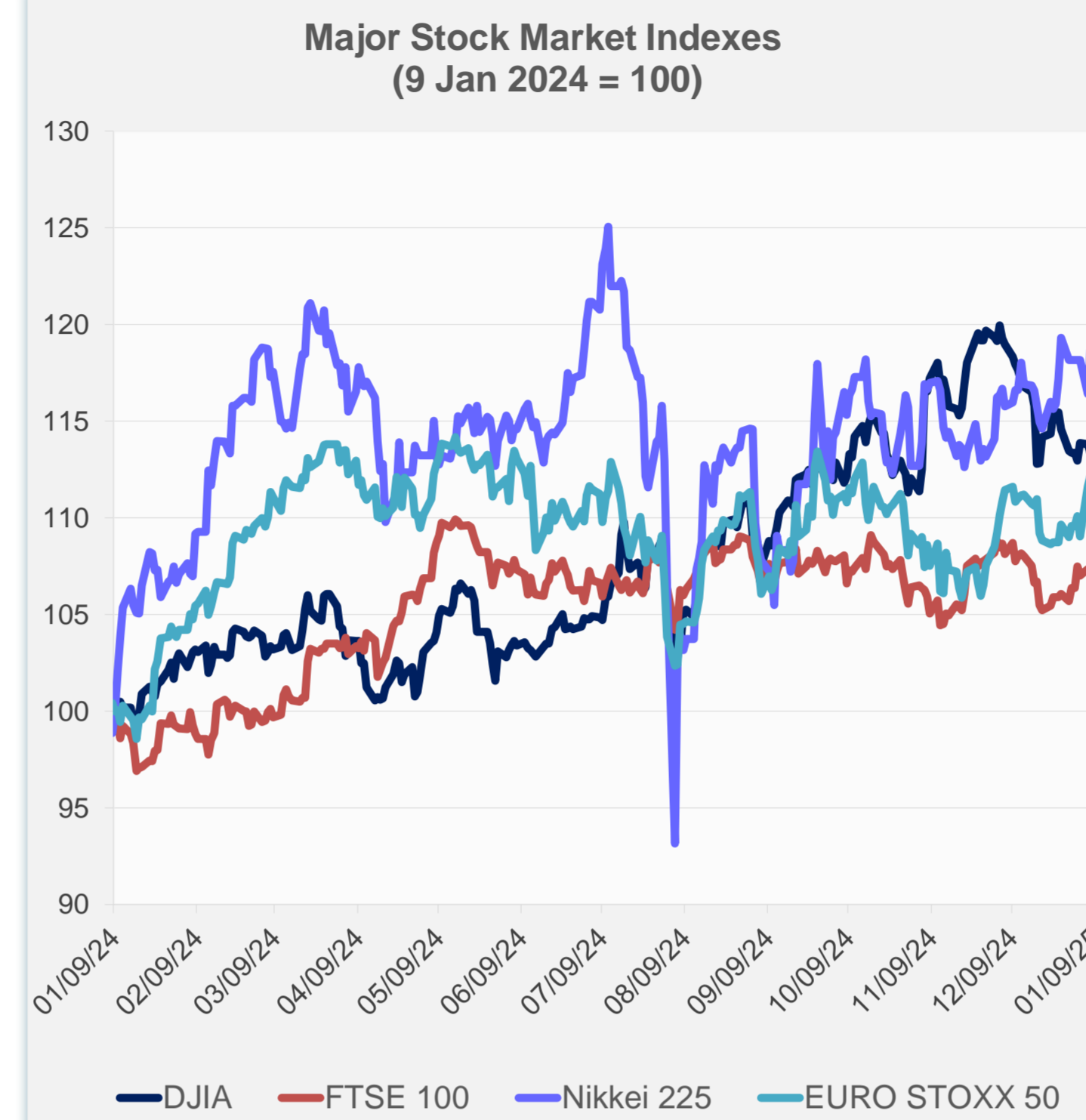


Source: Haver Analytics.

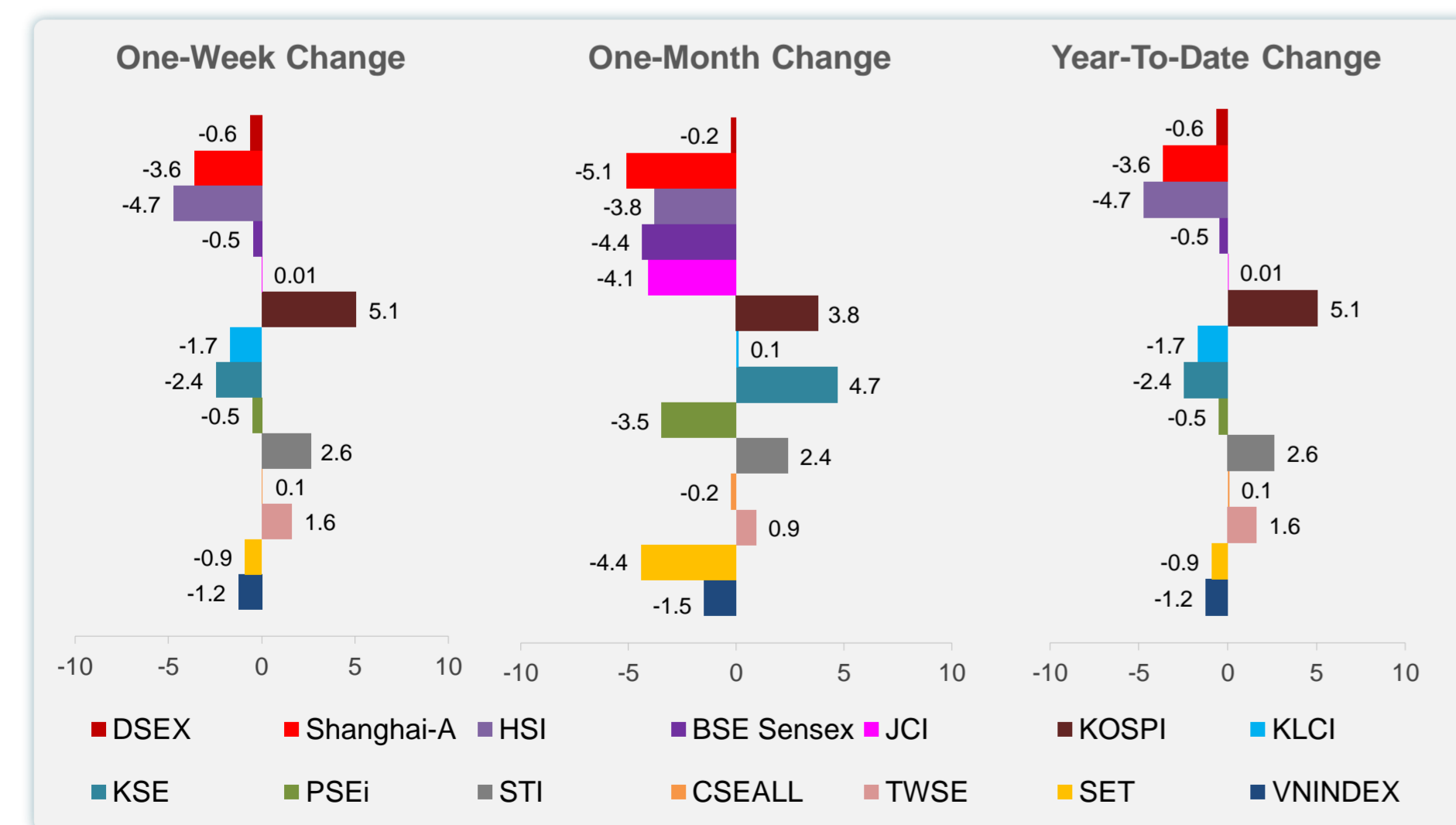
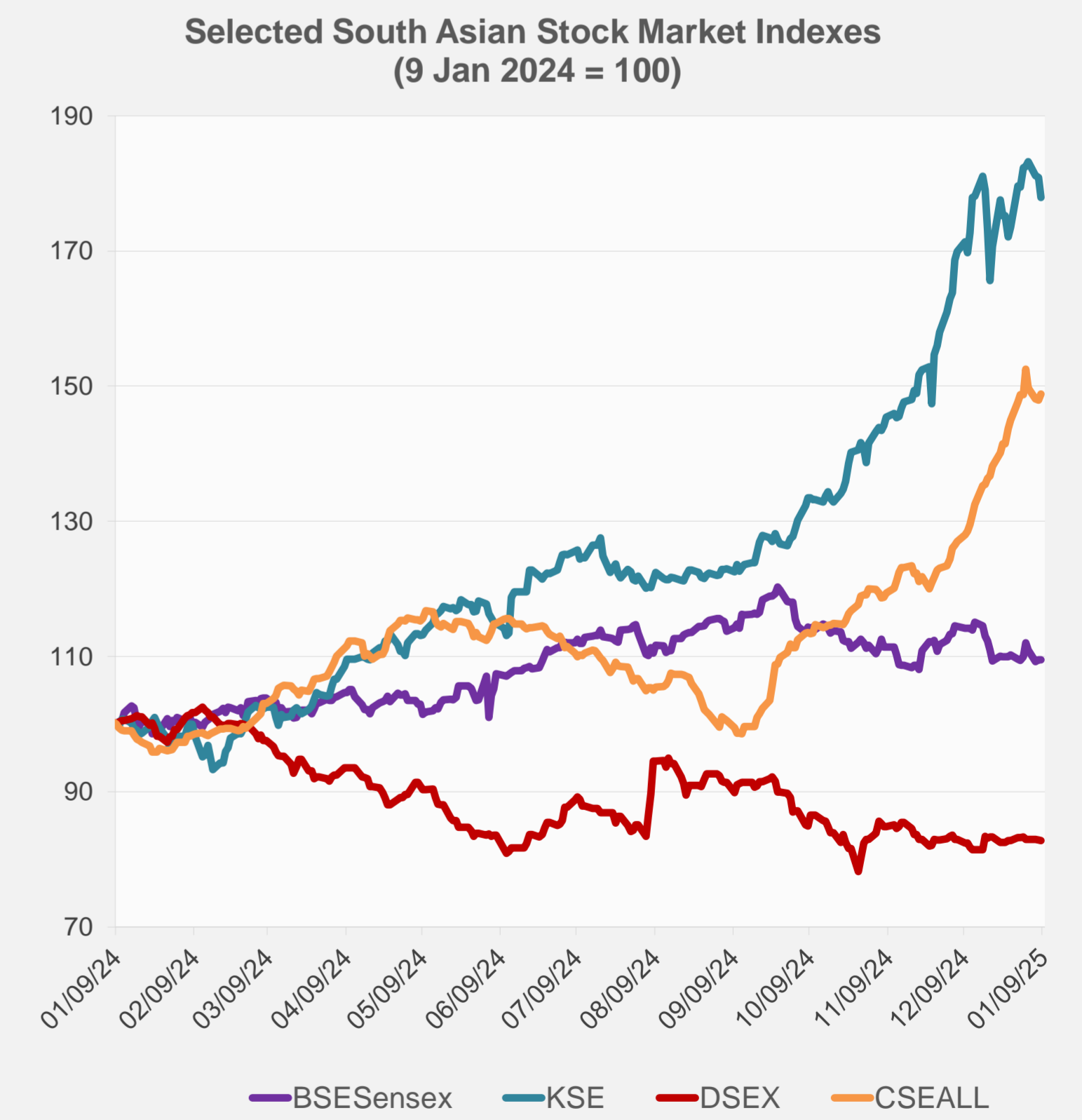
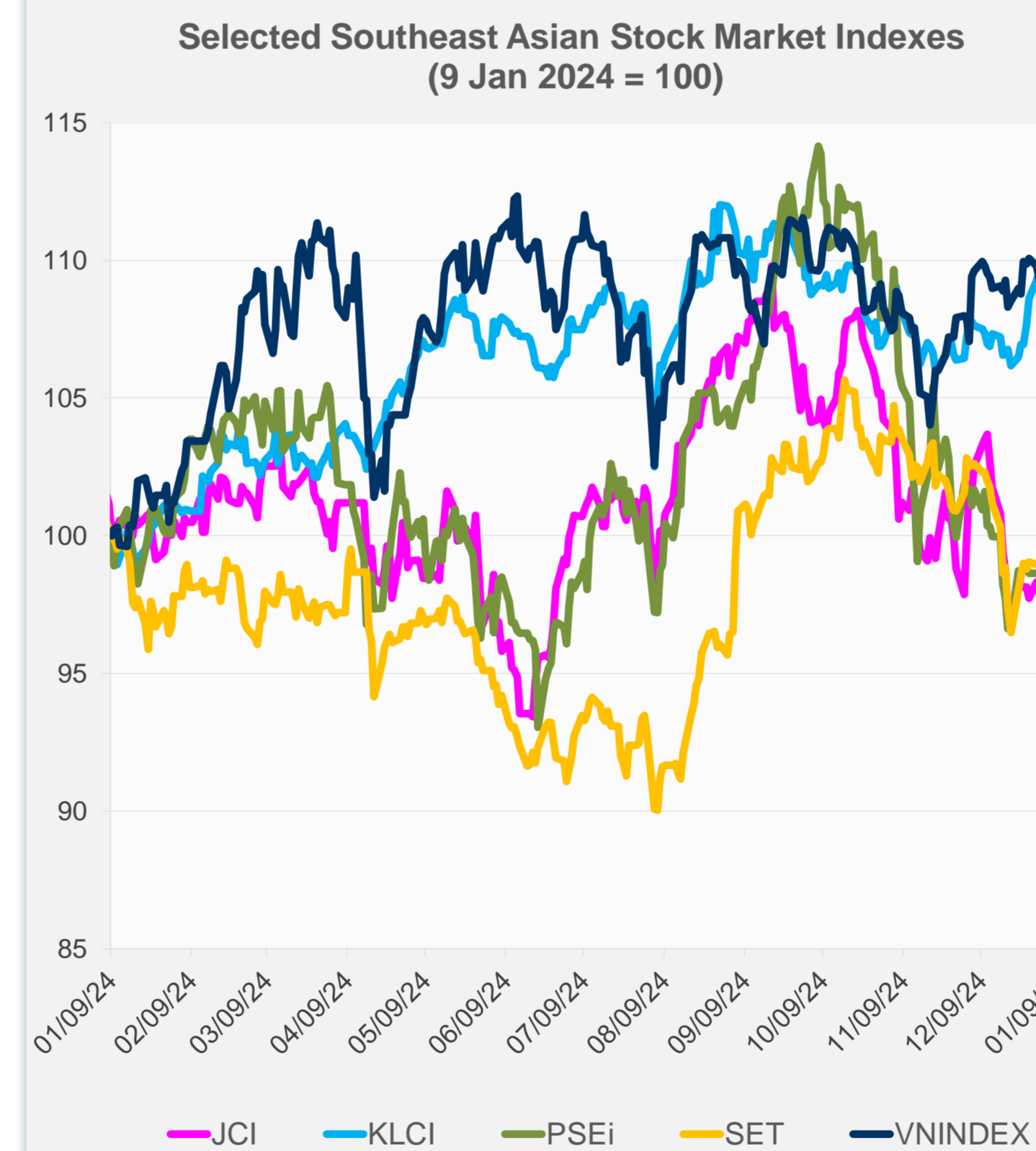
Daily Market Watch
STOCK INDEXES

9 January 2025, 9:00 AM Manila

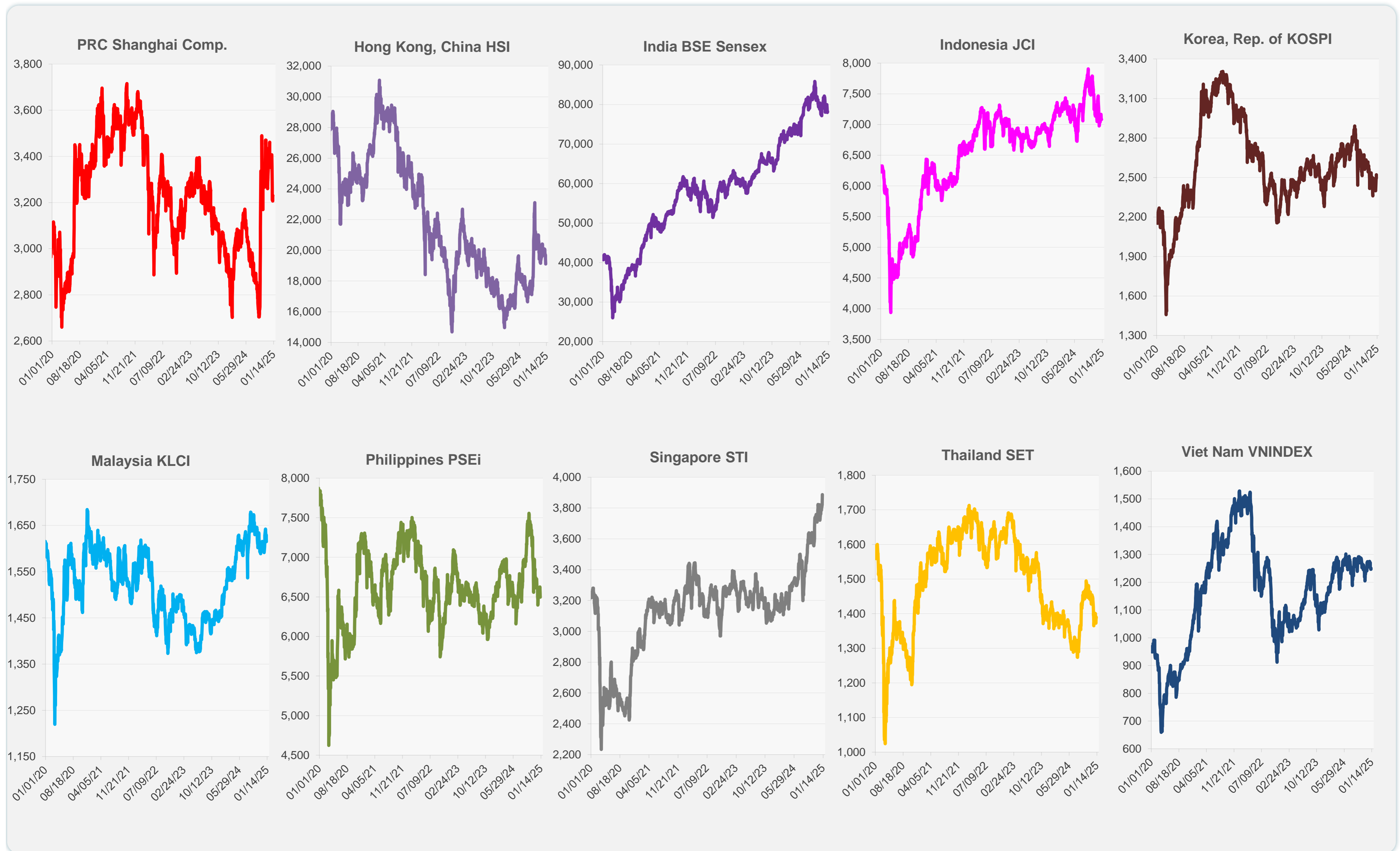
	Latest Closing	% change from Previous Day	% change from 01-Jan-25
US Dow Jones Ind Avg	42,635.20	0.25	0.21
US NASDAQ	19,478.88	-0.06	0.87
US S&P 500	5,918.25	0.16	0.62
UK FTSE 100	8,251.03	0.07	0.95
EURO STOXX 50	4,996.39	-0.31	2.05
Japan NIKKEI 225	39,981.06	-0.26	0.22
Bangladesh DSEX	5,185.00	-0.11	-0.64
PRC Shanghai Comp.	3,230.17	0.02	-3.63
Hong Kong, China HSI	19,111.54	-1.73	-4.73
India BSE Sensex	78,148.49	-0.06	-0.46
Indonesia JCI	7,080.35	-0.04	0.01
Korea, Rep. of KOSPI	2,521.05	1.16	5.07
Malaysia KLCI	1,614.83	-0.92	-1.67
Pakistan KSE 100	114,148.45	-1.64	-2.44
Philippines PSEi	6,496.72	-0.74	-0.49
Singapore STI	3,886.98	1.54	2.62
Sri Lanka CSEALL	15,954.01	0.63	0.06
Taipei, China TWSE	23,407.33	-1.03	1.62
Thailand SET	1,387.72	-0.23	-0.89
Viet Nam VNINDEX	1,251.02	0.33	-1.24



NIE = Newly Industrialized Economies



Sources: ADB calculations using data from CEIC Data Company and Haver Analytics.



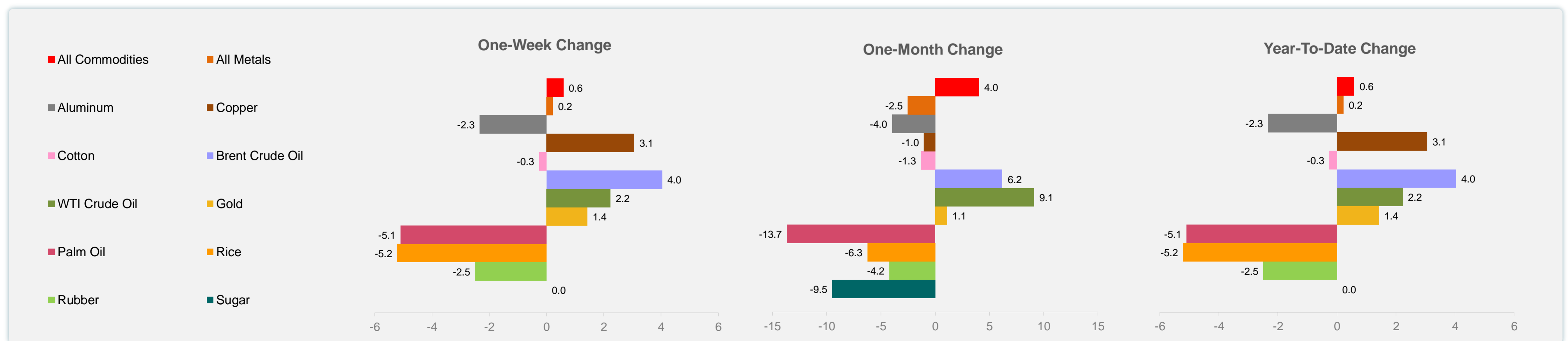
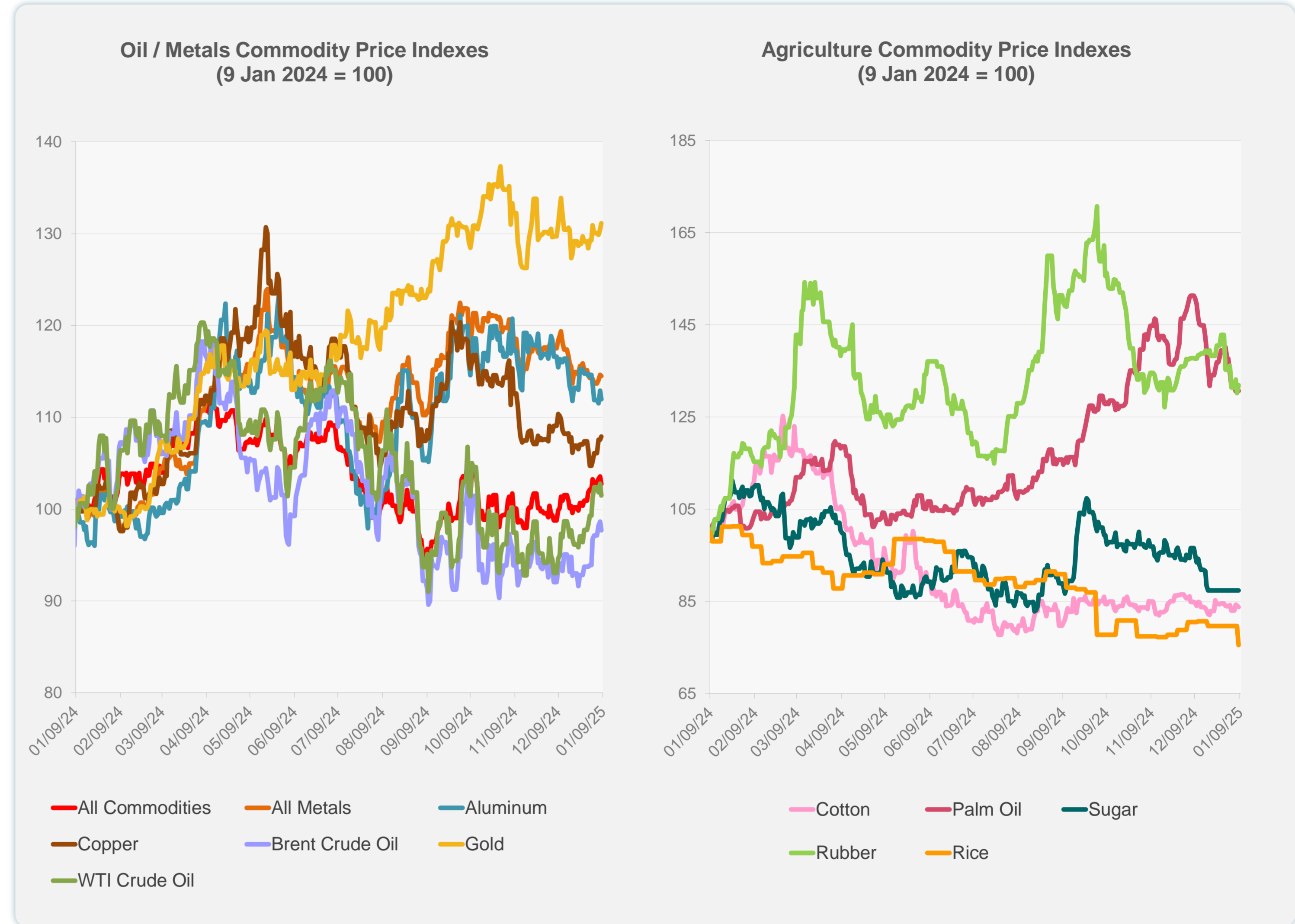
Sources: CEIC Data Company and Haver Analytics.

Daily Market Watch
COMMODITY PRICES

9 January 2025, 9:00 AM Manila

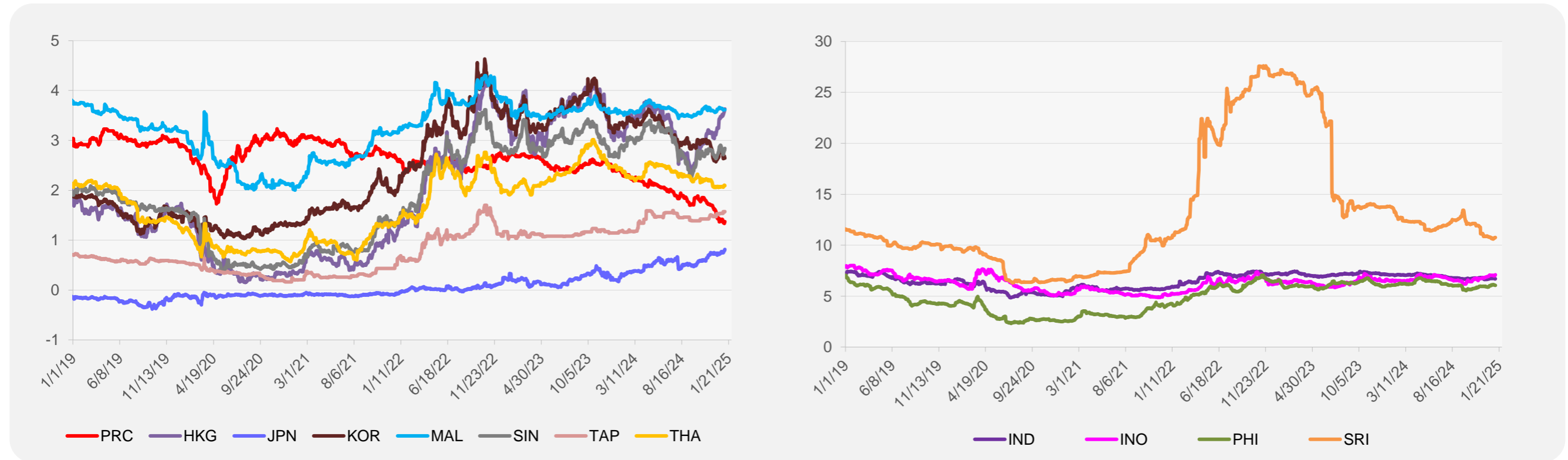
	Unit	Latest Closing	% change from Previous Day	% change from 01-Jan-25
S&P All Commodities	US\$	552.88	-0.80	0.59
S&P All Metals	US\$	308.06	-0.10	0.22
Aluminum	US\$/metric ton	2,467.70	-0.84	-2.34
Copper	US\$/metric ton	8,917.34	0.34	3.06
Cotton	US cents/lb	65.73	-0.42	-0.26
Brent Crude Oil	US\$/barrel	77.10	-0.96	4.03
WTI Crude Oil	US\$/barrel	73.32	-1.25	2.23
Gold	US\$/troy oz	2,661.94	0.50	1.43
Palm Oil	US\$/metric tonne	1,044.08	-0.63	-5.09
Rice ¹	US\$/metric ton	509.00	-5.21	-5.21
Rubber ²	US\$/kg	230.90	1.32	-2.49
Sugar	US cents/lb	18.59	0.00	0.00

¹ Latest closing price from 8 January 2025.
² Singapore Exchange, Ribbed Smoked Sheet Rubber.

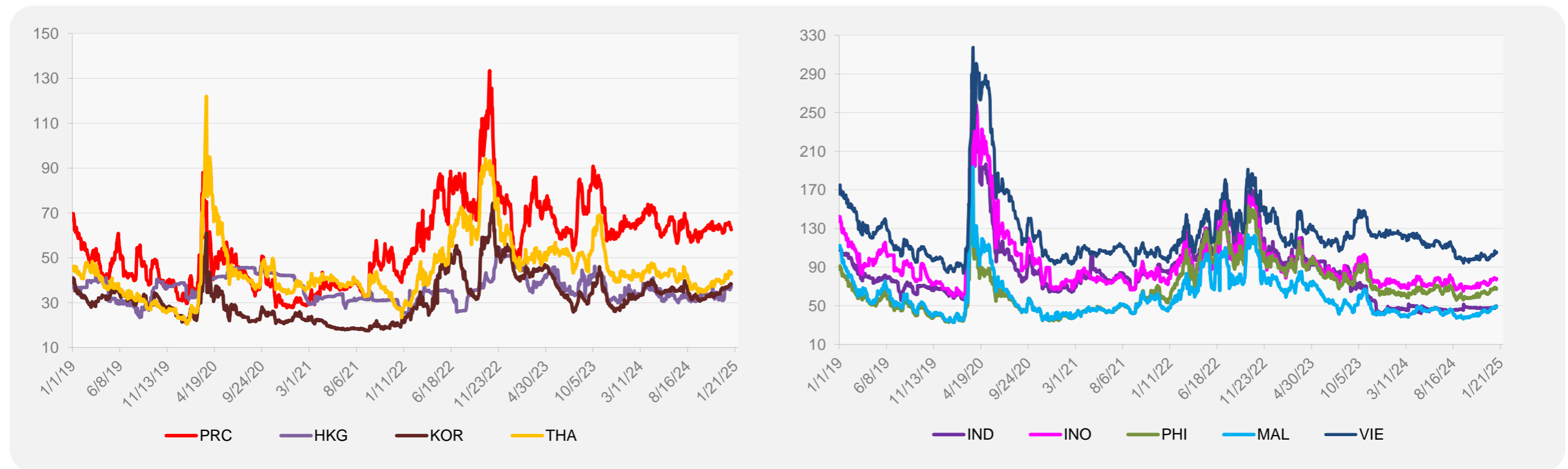


Source: ADB calculations using data from Bloomberg.

5-YEAR LOCAL CURRENCY GOVERNMENT BOND YIELDS (%)



5-YEAR CREDIT DEFAULT SWAP¹



¹ In USD and based on sovereign bonds.
Source: ADB calculations using data from Bloomberg.